



COCKLES FARM  
Moor to Sea!

## Discovery Adventure Green Travel Trip: 12

Train, cycle or bus with ferry to Antony House, Near Torpoint (A National Trust property & film set for Alice in Wonderland 2010.)



*Luncheon venues*

*Suitable for children 5yo +*

*Travel options*

Duration

A half day.

Itinerary

1. Take the train eastbound from Saltash Station to Plymouth North Road station and walk down Armada Way to the Royal Parade Bus stops in the City Centre.
2. Alternatively catch one of the numerous buses from the bottom of Saltash Fore St. to Royal Parade in the City Centre.

3. From the City Centre, catch Bus No. 70, 70A or 70B from bus stop A3 on the south side of Royal Parade to Torpoint via the Torpoint Ferry.
4. Alight Trevithick Avenue, Torpoint and walk) 8 miles to Antony House.
5. Return by bus to Royal Parade, Plymouth and then by bus or train to Saltash.

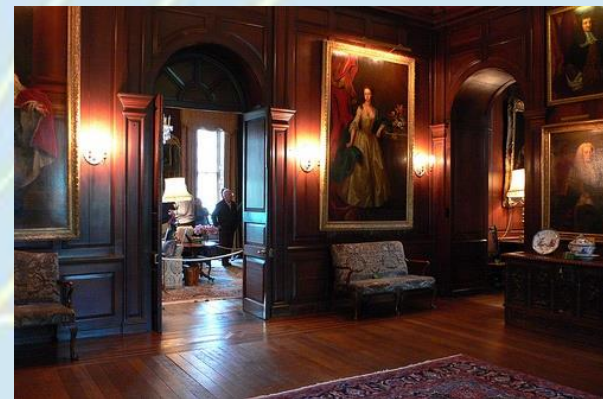
### Food and Drink Stops

- Antony Tea Room: <https://www.antonywoodlandgarden.com/vintage-tea-room/>
- Wilcove Inn: <https://thewilcoveinn.com/location/>

Map Ordnance Survey Landranger 201

### Tips

- Double check your rail and bus connections and times before setting out.
- Catch the 70, 70A, or 70B bus to complete a loop via Whitsand Bay, Kingsand and Cawsand to Cremyll and catch the Cremyll Ferry across to Plymouth.
- Consider stop offs at the beaches at Whitsand Bay (Tregantle or Freathy), Kingsand/Cawsand or Mt. Edgcumbe Country Park. See Discovery Adventure Trip 5 for more details.



### Links

Antony House (National Trust) <https://www.nationaltrust.org.uk/antony>

Antony Woodland Garden <https://www.antonywoodlandgarden.com/>

National Rail Enquiries. <https://www.nationalrail.co.uk/>

Cornwall Bus Timetable (Bus nos. 70, 70A & 70B) <https://www.transportforcornwall.co.uk/timetables/>

Plymouth City Buses <https://www.plymouthbus.co.uk/journey-planner/network-map/>

[https://assets.goaheadbus.com/media/cms\\_page\\_media/1117/AW2%20130818%20AH%2018-5047%20SHOP%20MAP%20\[SEPT%202018\]%203500x2700mm.pdf](https://assets.goaheadbus.com/media/cms_page_media/1117/AW2%20130818%20AH%2018-5047%20SHOP%20MAP%20[SEPT%202018]%203500x2700mm.pdf)

Mount Edgcumbe Country Park <https://www.mountedgcumbe.gov.uk/>